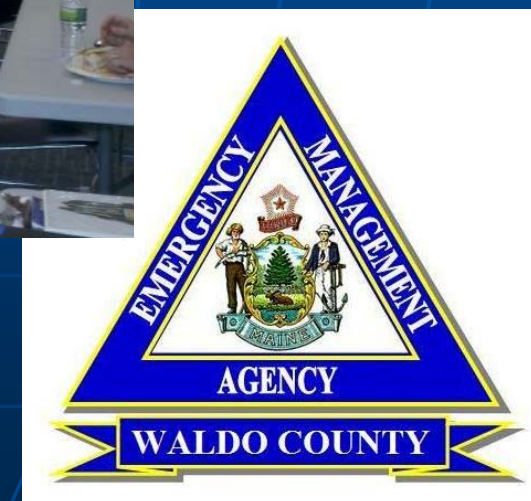
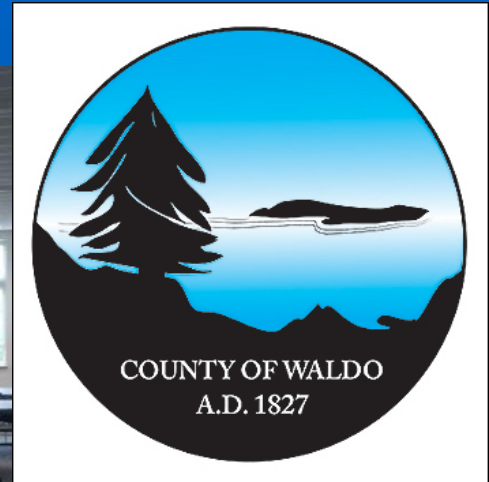


Emergency Management



Emergency Management

- An organized effort to mitigate against, prepare for, respond to, and recover from an emergency.

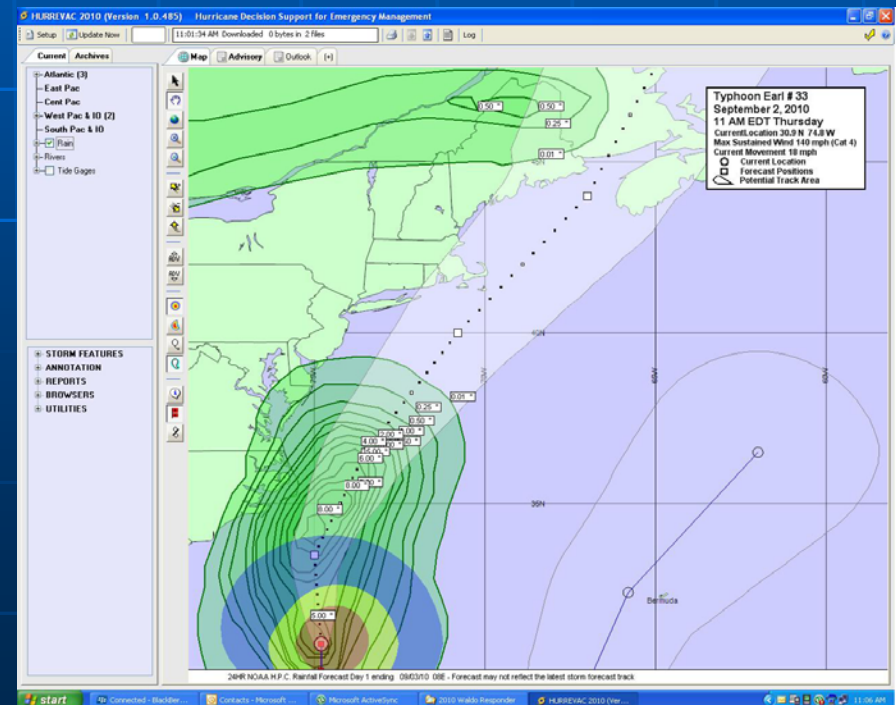


Origins in Civil Defense



Emergency

- Any Event which threatens to, or actually does, inflict damage to property or people.



Disaster

- A dangerous event that causes significant human and economic loss and demands a crisis response beyond the scope of local and State resources.
- Disasters are distinguished from emergencies by the greater level of response required.

Hazard

- *A dangerous event or circumstance that has the potential to lead to an emergency or disaster.* Natural hazards are caused by natural events that pose a threat to lives, property, and other assets. Technological hazards are caused by the tools, machines, and substances we use in everyday life. Intentional hazards, such as terrorism or riots, are deliberately caused by people attacking or damaging what is valuable in a society.

All Hazards

- Natural Disasters
- Technological Accidents
- Attacks



Large Scale Accidents



Hazardous Materials



Maritime Accidents



Severe Storms & Utility Outages



Flooding



Forest Fires



Winter Storms



Vulnerability

- How exposed or susceptible to damage an asset is. Vulnerability assessment provides the extent of injury and damages that may result from a hazard event of a given intensity in a given area



Population Trends

That is making the EM Job Tougher

- Density
- Age
- Foreign Languages
- Functional Needs
- Individual Skills
- Expectations
- Self Reliance and Responsibility

Four Phases of Emergency Management

- Mitigation
- Preparedness
- Response
- Recovery

Mitigation

Sustained actions taken to reduce or eliminate long term risk from hazards and their effects.



Development Impacts

- Residential Construction
 - Coastal and Waterfront Properties
 - Heavily wooded, closed in areas
- Road Infrastructure
- Stormwater Management
- Electrical Infrastructure
 - Vulnerabilities
 - Expectations



Mitigation Planning

- Current County plan is dated Sep 11
- Identifies primary hazards
 - Flooding, Winter Storms, Hurricanes
- Assesses risk and vulnerabilities
 - Roads and Power lines primarily
- Prioritizes mitigation activities
 - Mostly road improvements to correct stormwater management deficiencies

Preparedness

Actions that strengthen the capability of government, citizens, and communities to respond to disasters.



Preparedness

Planning

Resource Inventory

Mutual Aid

Training

Education

Exercises



Response

The actions taken during an event to Address immediate life and safety needs and to minimize further damage to properties.



New Technologies

- GIS Mapping
- Common Operating Picture applications
 - Virtual Maine
 - WebEOC
- Digital Radio Transmissions
- Radio Tracking

Recovery

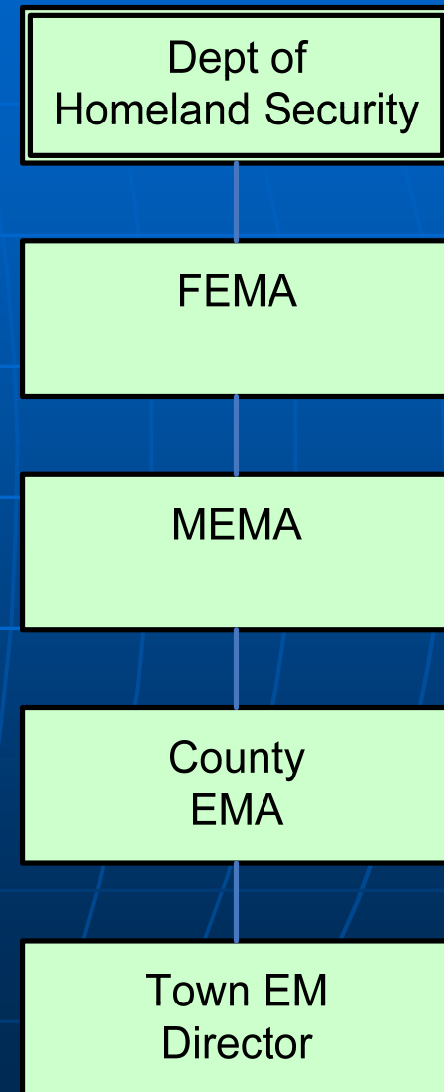
The actions taken by an individual or community after a catastrophic event to restore order and lifelines in a community.



Emergency Managers

- Department of Homeland Security
- Federal Emergency Management Agency
- Maine Emergency Management Agency
- County Emergency Management Agency
- Local Emergency Management Director
- Citizens

All disasters are local!



EM Functions

- Hazard Analysis
- Emergency Planning
- Direction and Control
- Resource Management
- Communications and Warning
- Training and Exercising
- Public Information

Operational Tasks

- Situational awareness
- Resource Management
- Communications
- Public Information
- Mass Care
- Damage Assessment
- Emergency Operations Center (EOC)
- Incident Management Assistance Team



The Resource Process

1. Town resources (on hand or rented)
2. Town Mutual Aid
3. County
4. County Mutual Aid
5. State resources
6. State to State resources
7. Federal resources
8. Non-profits, businesses, etc

In Conclusion

- Emergency Management prepares citizens, businesses, organizations, and government entities to respond to major emergencies and disasters.
- No other agency provides linkage of all public safety organizations to respond as one

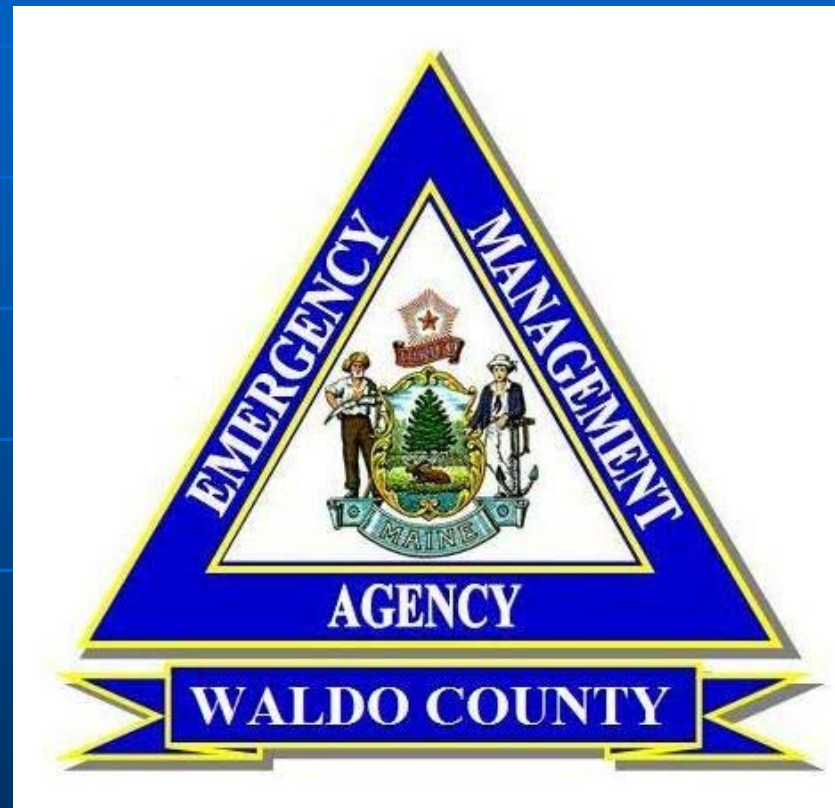
Your County Emergency Management Program!

Ph: 338-3870

Fax: 338-1890

4 Public Safety Way

Belfast, ME



emadirector@waldocountyme.gov